

Net Irrigate Telemetry Box

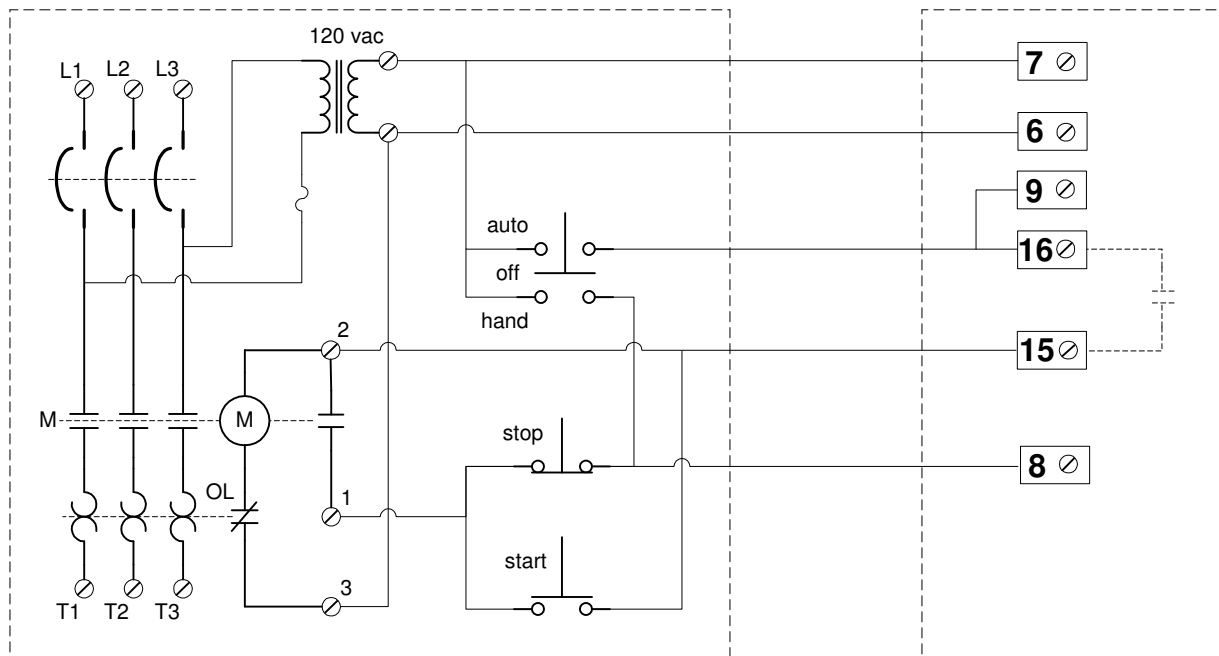
Output Relay Connection Diagrams for Motor Control

Relay Output Motor Control 1A

Connection diagram for automatic and manual control of a standard three phase motor starter using the Net Irrigate Telemetry Box.

Three Phase Combination Starter with 120 volt 3 wire momentary control circuit and 'hand/off/auto' selector switch.

Net Irrigate Telemetry Box Terminal Strip



Net Irrigate Terminal Functions

- | | |
|-------------------------------------|---|
| 6. 120 vac neutral | |
| 7. 120 vac supply power. | 'Power On' supply power for Net Irrigate Telemetry Box |
| 8. Safety Stop (Overcurrent) | If output relay contact (15-16) is closed, auxiliary input (9) is closed and safety stop input (8) is open the motor has tripped on overcurrent (OL) and has stopped. Overcurrent trip can only be monitored with the selector switch in the 'auto' position. |
| 9. Auxiliary Input (Local / Remote) | If input 7 and 9 are 'on' the selector switch is in the 'auto' position. If input 7 is 'on' and input 9 is 'off' the selector switch is in the 'hand' or 'off' position. |
| 15. Output relay contact N.O. | Close contact to run motor. Open contact to stop motor. |
| 16. Output relay common. | |